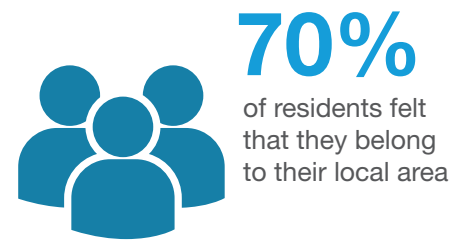
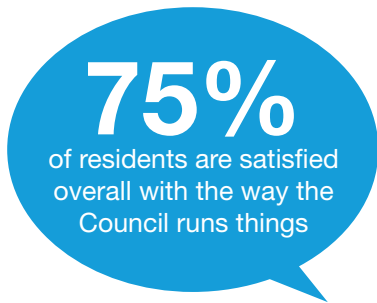


Residents' Survey 2021

Perceptions of the Council



Your local area



Satisfaction with the local area as place to live increased with age

65 years and over

88%

Wholly retired from work

88%

A strong sense of belonging to the local area increased with age and was more prevalent in those 'wholly retired from work'

16-34 years

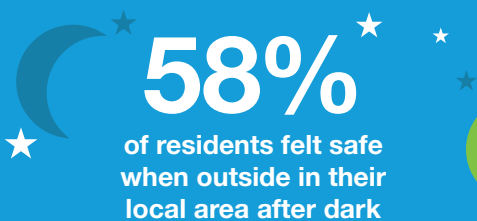
61%

65 years and over

76%

Wholly retired from work

88%



90%

of residents felt safe when outside in their local area during the day

Satisfaction with local services



Waste and recycling collection

83%



Parks and green open spaces

79%

Keeping public land clear of litter and refuse

65%



50%



Sport and Leisure Facilities

The Council's Priorities 2022/23

In 2022/23 we will see further development and investment in key programmes all of which aim to support our communities to thrive; to drive forward innovations that allow us to continue being an exemplary council; to develop a fair local economy that works for everyone across the borough; and to deliver good homes, greener spaces and healthy places for residents.

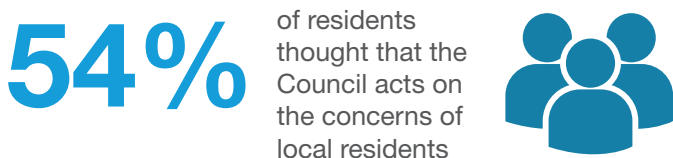
What you said



of residents were satisfied with keeping public land clear of litter and refuse services

Things you said needs most improving:

- Litter and street cleaning



Things you said needs most improving:

Activities, community facilities and entertainment

Recovering from the pandemic you said you were most concerned for:

- The physical health of their friends and family
- The mental health of their friends and family
- Their own mental health



To get more information and to find out what's next visit www.southribble.gov.uk/residentsurvey

The Council is delivering...

We are investing **£1.6m** to improve your existing leisure facilities.

We are investing **200k** to **target fly tipping** and **environmental improvements** across the borough to enable clean and safe local areas for residents.



Our **Youth Council** will be established to ensure the views of young people are heard.



We are continuing the community hubs to engage and support communities.

We are supporting communities to deliver celebrations to mark the **Queens Jubilee**.

We are delivering a major musical event **'Music in the Park 2022'** at Worden Park.

We are investing **£2.379m** in open spaces, play areas and parks.

We will also invest **£200k for improvements** to smaller open space and play areas across the borough.

We are investing **200k** to support businesses in recovering from the impact of Covid.

We are providing a **£200k fund** to invest in sports clubs and community organisations to continue and grow following the impacts of the pandemic.