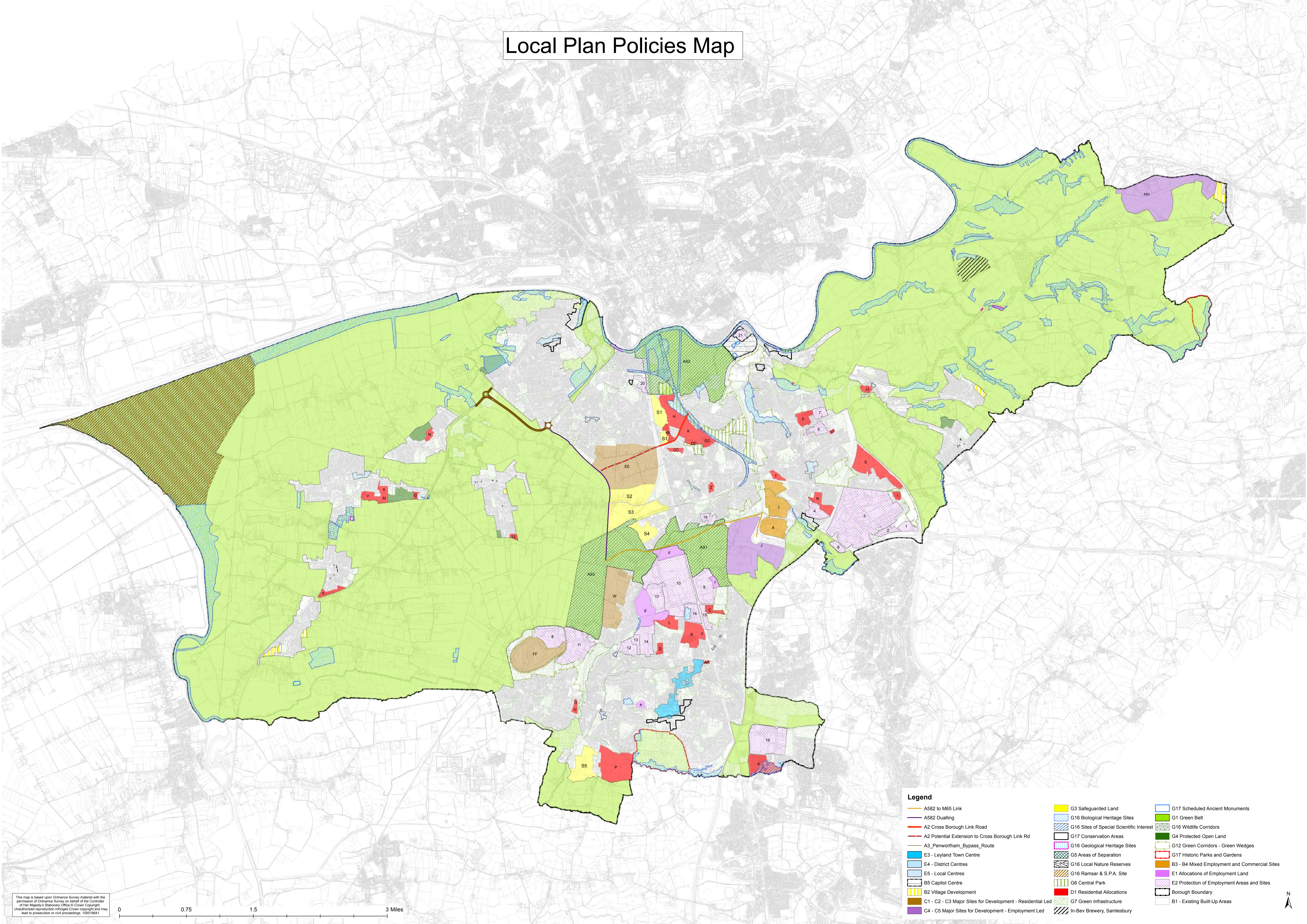


# Local Plan Policies Map



## Legend

- |   |  |   |
|---|--|---|
| <ul style="list-style-type: none"><li>A582 to M65 Link</li><li>A582 Dualling</li><li>A2 Cross Borough Link Road</li><li>A2 Potential Extension to Cross Borough Link Rd</li><li>A3_Penwortham_Bypass_Route</li><li>E3 - Leyland Town Centre</li><li>E4 - District Centres</li><li>E5 - Local Centres</li><li>B5 Capitol Centre</li><li>B2 Village Development</li><li>C1 - C2 - C3 Major Sites for Development - Residential Led</li><li>C4 - C5 Major Sites for Development - Employment Led</li></ul> | <ul style="list-style-type: none"><li>G3 Safeguarded Land</li><li>G16 Biological Heritage Sites</li><li>G16 Sites of Special Scientific Interest</li><li>G17 Conservation Areas</li><li>G16 Geological Heritage Sites</li><li>G5 Areas of Separation</li><li>G16 Local Nature Reserves</li><li>G16 Ramsar &amp; S.P.A. Site</li><li>G6 Central Park</li><li>C1 - C2 - C3 Major Sites for Development - Residential Led</li><li>C4 - C5 Major Sites for Development - Employment Led</li><li>G7 Green Infrastructure</li><li>In-Bev Brewery, Samlesbury</li></ul> | <ul style="list-style-type: none"><li>G17 Scheduled Ancient Monuments</li><li>G1 Green Belt</li><li>G16 Wildlife Corridors</li><li>G4 Protected Open Land</li><li>G12 Green Corridors - Green Wedges</li><li>G17 Historic Parks and Gardens</li><li>B3 - B4 Mixed Employment and Commercial Sites</li><li>E1 Allocations of Employment Land</li><li>E2 Protection of Employment Areas and Sites</li><li>Borough Boundary</li><li>B1 - Existing Built-Up Areas</li></ul> |
|---|--|---|