

# Getting things done

**Each day we go over and beyond our statutory duties as a local authority to support South Ribble and its residents and businesses to thrive.**

Our focus is on our communities and how we can support people to live happier and healthier lives with access to excellent services, high quality facilities and plenty of fantastic green and open spaces to enjoy.

## In the last year we have been able to:

- Provide stunning outdoor spaces, securing a new Green Flag winning park, Farington Park, with Worden Park voted in the top 10 of the People's Choice Awards.
- Continue our investment and refurbishment of the borough's leisure centres, allowing people to have quality facilities, locally. Over 2000 children now swim in the borough per week.
- Move forward with our transformation in Leyland and Penwortham through the Leyland Town Deal and our Penwortham Masterplan, providing quality public spaces for generations to come.
- Support our communities with initiatives to support with the cost of living and with our innovative social

prescribing scheme, helping our residents through challenges.

- Deliver homes where people can live well in the borough for longer, and to reduce the burden on local NHS services, by opening the award-winning extra care scheme, Jubilee Gardens.

## Keeping Council Tax under inflation

Only about 10% of Council Tax is paid to South Ribble Borough Council, but we are conscious that everyone is feeling the squeeze on the cost of living. So that's why we are raising our Council Tax below the rate of inflation, 1.90%. Just 9p more a week for a band D property.

Despite financial constraints, this budget is balanced. We've invested in the right places and have found efficiencies in how we work including our Fit for the Future programme which is set to make over £1m in savings.

This all allows us to continue to deliver our excellent services and continue to make the lives of our residents better.

## YOUR VOICE YOUR FUTURE

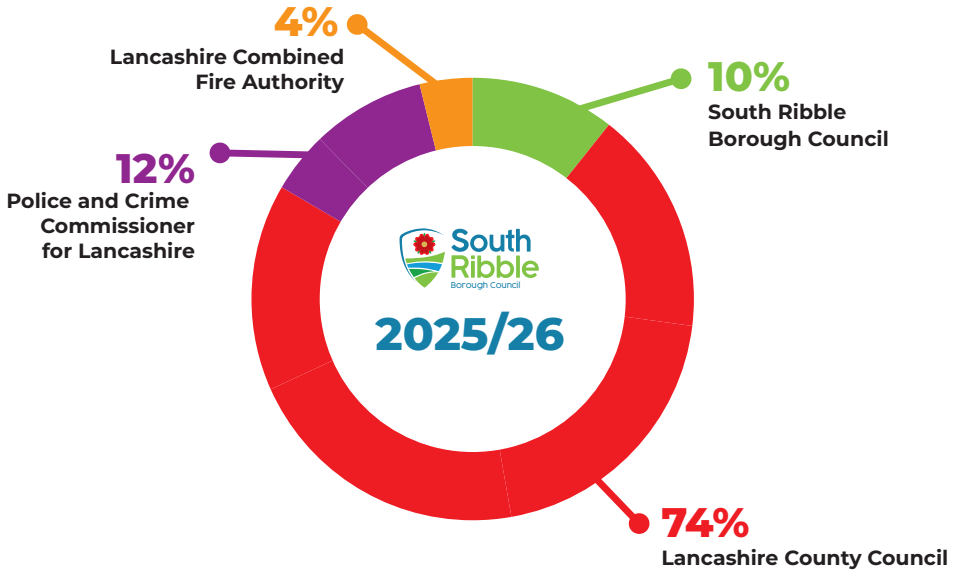
**Are you 16 or 17?**  
**You can register to vote NOW!**  
**Shape your world before you turn 18**  
[southribble.gov.uk/register tovote](https://southribble.gov.uk/register tovote)



It's **quick, easy** and your first step to **making a difference**

# Where does your Council Tax go?

We receive just **10%** of your overall Council Tax bill.



## One of the lowest Council Tax rates in Lancashire

Our Council Tax rates have remained one of the lowest across Lancashire and our increase is below the rate of inflation at just 1.90%. See the table for the comparable rates for the district portion of Council Tax for a band D property.

We look forward to the year ahead and know that we can continue to move forward with our ambitious plans for the borough.

Keep up to date with our news and events at [southribble.gov.uk](https://southribble.gov.uk) or on our social media.

Council	Band D Equivalent 2025/26 (excluding parish precepts) £
Preston	364.45
Burnley	344.58
Rosendale	317.66
Pendle	307.52
Hyndburn	276.46
Lancaster	264.30
West Lancs	238.58
<b>South Ribble</b>	<b>236.78</b>
Wyre	233.08
Fylde	232.17
Chorley	215.99
Ribble Valley	170.69

# LITTLE CADDY **BIG** DIFFERENCE

Your  
new **FREE**  
service

Put your food waste in the caddy, and put your  
leftovers to work for a greener South Ribble. 

Food waste in landfill creates harmful gases  
which are bad for the environment.  
**Recycle it instead and help make clean energy.**

**From 13 April** we'll start your free weekly  
food waste collection.



Find out more at  
[southribble.gov.uk/foodwaste](https://southribble.gov.uk/foodwaste)



Funded by  
UK Government



# Save time – do it online!

**Did you know that you can access most of our services online, including paying your Council Tax bill?**

The easiest way to pay your Council Tax is to set up a Direct Debit online. Do it now at [southribble.gov.uk/counciltaxdirectdebit](https://southribble.gov.uk/counciltaxdirectdebit)

It's safe and easy and means:

- No more queuing to pay
- No more phone calls to pay your Council Tax
- You have a choice of payment date
- You do not have to remember to pay on the due date
- No more cheques to write or letters to post

## Don't fancy Direct Debit?

You can still pay your balance online quickly and easily. Visit [southribble.gov.uk/paycounciltax](https://southribble.gov.uk/paycounciltax)

## What else can be done online?

From reporting fly tipping to viewing planning applications, to ordering a brand-new bin, there are so many services which can be accessed online.

Set up an account now on our website at:  
[southribble.gov.uk](https://southribble.gov.uk)



# Garden Waste Collection Service

**Sign up now for the garden waste collection service**

Sign up **ON 1 March 2026** to receive garden waste collections from **1 April 2026 to 31 March 2027**



visit [southribble.gov.uk/gardenwaste](https://southribble.gov.uk/gardenwaste)

**Less than £3.50 per month\***

At least 22 collections a year (with collections running fortnightly).

Free brown bin included for those who do not already have one at their address. If you pay by Direct Debit, you do not need to do anything.

We will contact you to give you advance notice of your Direct Debit, including the amount and when this will be claimed.

\*annual fee of £40

